

LET'S GO! TRAVEL PRESENTS

Nashville Show Trip



INCREDIBLE PRICE INCLUDES:

- ◆ Motorcoach transportation
- ◆ 6 nights lodging including 4 consecutive nights in Nashville
- ◆ 10 meals: 6 breakfasts and 4 dinners
- ◆ 3 Great Shows: 1) The Grand Ole Opry, 2) Nashville Nightlife Dinner Theater
- ◆ 3) "A Tribute to the King" at the Texas Troubadour Theatre
- ◆ Guided Tour of Nashville
- ◆ Admission to the Country Music Hall of Fame
- ◆ Admission to Loretta Lynn's Ranch and Belle Meade Plantation
- ◆ Ride on the Delta Flatboats inside the Opryland Hotel and *much more*

\$675 *

7 DAYS 6 NIGHTS

PER PERSON, DOUBLE OCCUPANCY

(Sun - Sat)

November

15 - 21, 2009



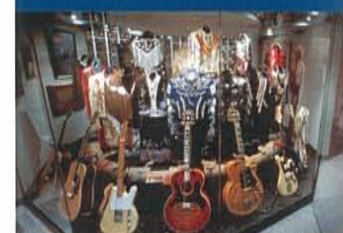
Spectacular Loretta Lynn's Ranch.



Nashville Nightlife Dinner Theater.



Famous Grand Ole Opry.



Country Music Hall of Fame.

Departure: Saginaw, MI @ 8 am, then Waterford Estates Lodge, Lansing, MI

Day 1: Depart in the comfort of video and restroom equipped Motorcoach as you head for lots of excitement in Nashville. This evening you'll check into your en route hotel.

Day 2: Enjoy a Continental Breakfast before you depart for your final destination. Upon arrival, enjoy a relaxing Dinner and check into your Nashville area hotel for a four night stay in anticipation of the exciting days ahead.

Day 3: After enjoying a Continental Breakfast, you'll take a Guided Tour of Nashville, including a stop at the Parthenon. The Parthenon is the world's only full scale reproduction of the famous Greek Temple. Then you will experience a ride on the Delta River flatboats inside the Opryland Hotel. This evening you will enjoy Dinner before going to see a show at the famous Grand Ole Opry.

Day 4: Today, after a Continental Breakfast, you'll head to the new \$40 million Country Music Hall of Fame. This is a state of the art cultural landmark and an architectural crown jewel of the Nashville skyline. Be amazed by its incredible array of rare costumes, instruments and historical mementos. Next, you'll have an opportunity to explore Historic Downtown Nashville. This evening, enjoy Dinner and a Show at the fabulous Nashville Nightlife Dinner Theater.

Day 5: Enjoy a Continental Breakfast before departing for a visit to Loretta Lynn's Ranch. Tour Loretta's Plantation Home, see the simulated coal mine and visit her "Coal Miner's Daughter Museum". Later visit Belle Meade Plantation, known as the "Queen of Tennessee Plantations". This evening enjoy Dinner and head off to the Texas Troubadour Theatre for "A Tribute to the King". This fascinating musical biography is an exciting performance that transports you through the career of Elvis Presley.

Day 6: Enjoy a Continental Breakfast before leaving for the Kentucky Derby Museum. Features more than 20,000 items documenting the history and tradition of the Kentucky Derby. This evening, relax at your en route hotel.

Day 7: Today, after enjoying a Continental Breakfast, you depart for home... A perfect time to chat with your friends about all the fun things you've done, the great sights you've seen and where your next group trip will take you!

ADD PEACE OF MIND TO YOUR TRIP...

With Diamond Tours Exclusive *Travel Confident*® Protection Plan if you have to unexpectedly cancel or cut your plans short. See back for details...

\$75 Due Upon Signing. *Price per person, based on double occupancy. Add \$180 for single occupancy. Final Payment Due: 9/9/2009

FOR INFORMATION & RESERVATIONS CONTACT:

**Mary Schultz @ (800) 474-3840
or (517) 351-2015 Call anytime**

Diamond Tours inc.
Bringing Group Travel to a Higher Standard®

Triple rates available. Please visit www.grouptrips.com/letsgotravel for additional available trips

Fla. Seller of Travel Ref No. ST32973.